

Quick Reference Guide

CareSens™ NPOP

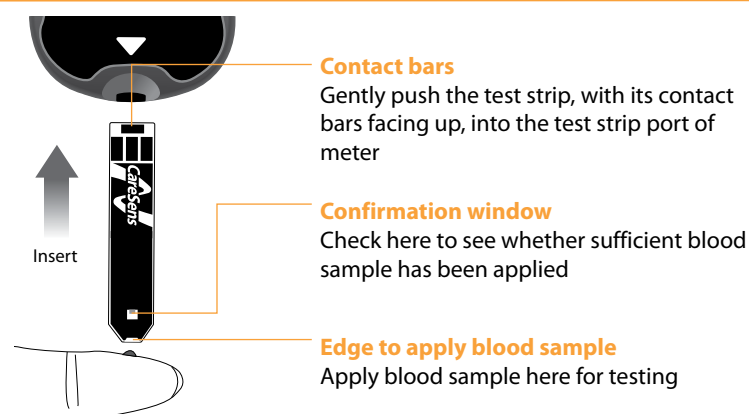
Blood Glucose Monitoring System

1. CareSens N POP Blood Glucose Meter

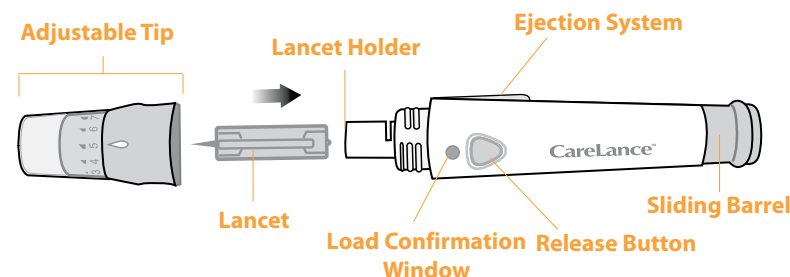


Note : It is recommended to check if the display screen on the meter matches the illustration above every time the meter turns on. Do not use the meter if the display screen does not exactly match the illustration as the meter may show incorrect results.

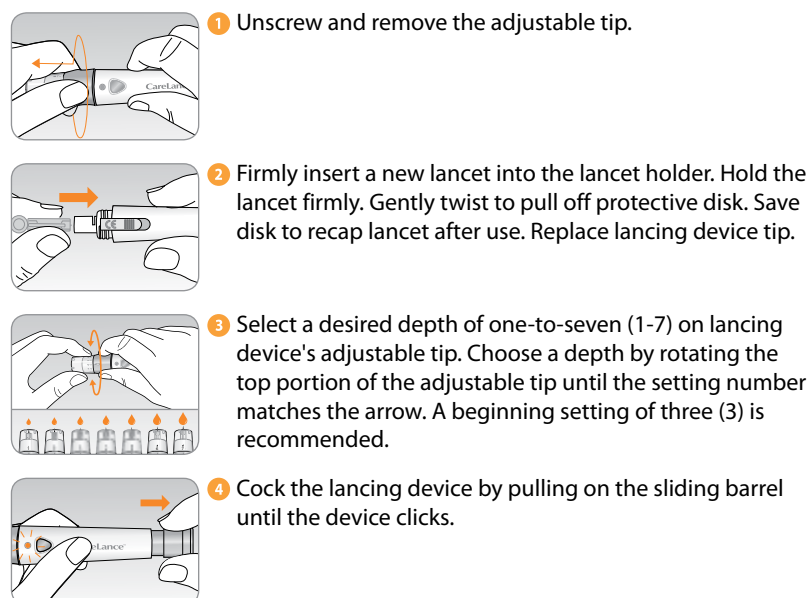
2. CareSens N POP Test Strip



3. Lancing Device



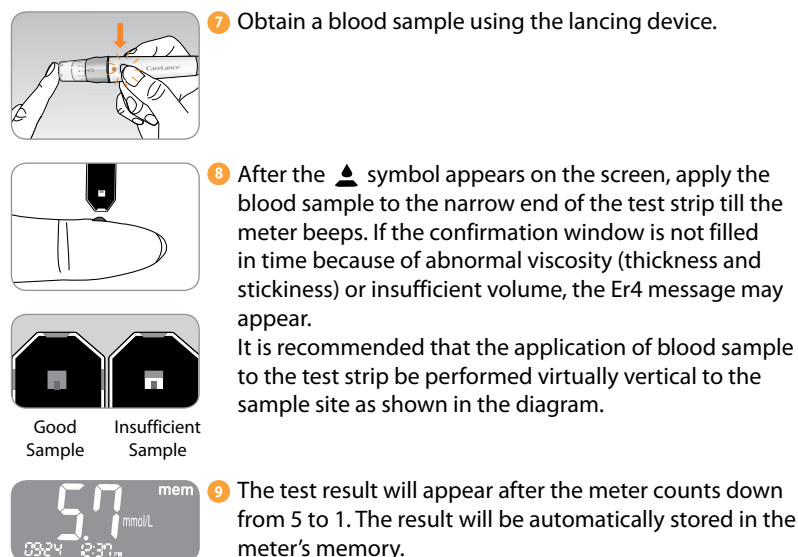
4. Preparing the Lancing Device



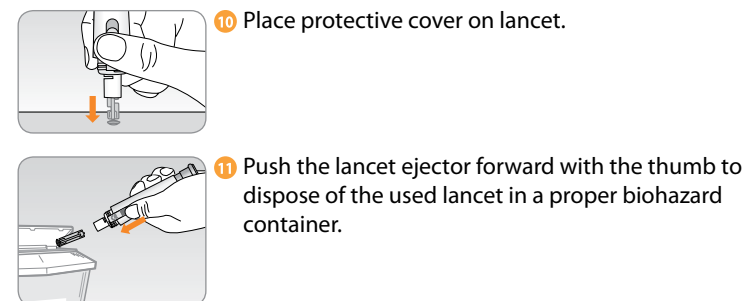
5. Preparing the Meter and Test Strip



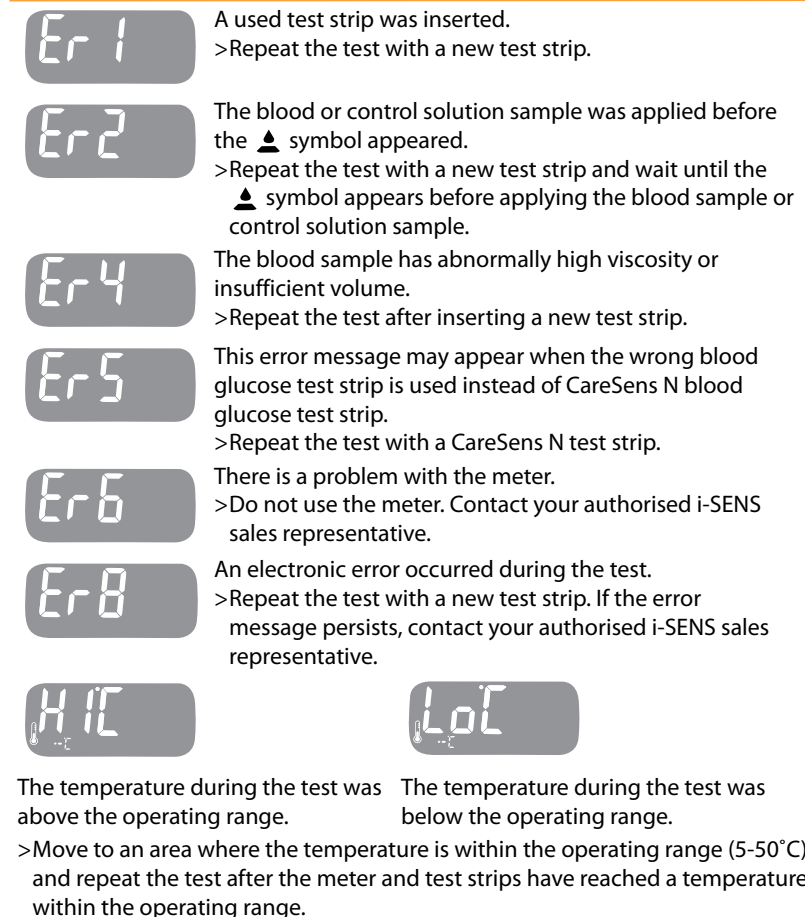
6. Applying Blood



7. Discarding Used Lancets



8. Display and Message



Quick Guide

CareSens™ **NPOP**
Blood Glucose Monitoring System

