

Checking the System



You may check your meter and test strips using the CareSens Control Solutions (control A, B and/or C). The CareSens Control Solution contains a known amount of glucose and is used to check that the meter and the test strips are working properly. The test strip vials have CareSens Control Solution ranges printed on their labels. Compare the result displayed on the meter to the CareSens Control Solution range printed on the test strip vial. Before using a new meter or a new vial of test strips, you may conduct a control solution test following the procedure on pages 21-22.

Notes:

- Use only the CareSens Control Solutions.
- Check the expiration dates printed on the bottle. When you first open a control solution bottle, record the discard date (date opened plus three (3) months) in the space provided on the label.
- Control solution tests must be done between 20–25°C. Make sure your meter, test strips, and control solution have adjusted to the above temperature ranges well before testing.
- Before using the control solution, shake the bottle, discard the first drop and wipe the tip clean.
- Close the control solution bottle tightly and store at a temperature of 8-30°C.

You may do a control solution test:

- When you want to practice the test procedure using the control solution instead of blood
- When using the meter for the first time

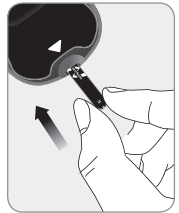
- Whenever you open a new vial of test strips
- If the meter or test strips do not function properly
- If your symptoms are inconsistent with the blood glucose test results and you feel that the meter or test strips are not working properly
- If you drop or damage the meter

Control Solution Testing

Step 1

Insert a test strip into the meter's test strip port, with the contact bars facing upwards. Gently push the test strip into the port until the meter beeps. Be careful not to bend the strip while pushing it in.

The ▲ symbol will be displayed on the screen.

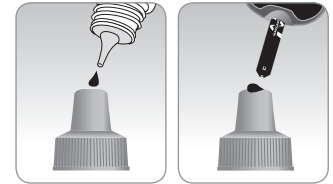


Step 2

Shake the CareSens Control Solution bottle well before each test.

Remove the cap and squeeze the bottle to discard the first drop.

Then wipe the tip with a clean tissue or cloth. After the ▲ symbol appears on the display, apply the solution to the narrow edge of the test strip until the meter beeps. Make sure the confirmation window fills completely.



Note: The meter may switch off if the control solution is not applied within 2 minutes of the ▲ symbol appearing on the screen. If the meter turns off, remove the strip, reinsert, and start from step 1.

Step 3

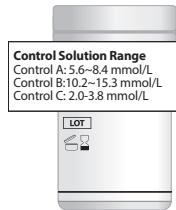
The display segments will rotate clockwise on the meter display and a test result will appear after the meter counts down from 5 to 1.

After your control solution result appears on the display, press **>>** for 3 seconds till the 'check' appears on the display. When the 'check' is displayed, the result is stored in the meter's memory but it will not be included in the averages.



Step 4

Compare the result displayed on the meter to the range printed on the test strip vial. The result should fall within the range. Used strips should be discarded safely in appropriate containers.



Caution: The range printed on the test strip vial is for the CareSens Control Solution only. It does not have any connection to your blood glucose level.

Note: The CareSens Control Solution can be ordered separately.

Comparing the Control Solution Test Results

The test result of each control solution should be within the range printed on the label of the test strip vial. Repeat the control solution test if the test result falls outside of the range. Out of range results may occur due to the following factors:

Situations	Actions
<ul style="list-style-type: none">• When the control solution bottle was not shaken well,• When the meter, test strip, or the control solution were exposed to high or low temperatures,• When the first drop of the control solution was not discarded or the tip of the bottle was not wiped clean,• When the meter is not functioning properly.	Repeat the control solution test by referring to the "Notes" on page 20.
<ul style="list-style-type: none">• When the control solution is past the expiration date printed on the bottle,• When the control solution is past its discard date (the date the bottle was opened plus three months),• When the control solution is contaminated.	Discard the used control solution and repeat the test using a new bottle of control solution.

If results continue to fall outside the range printed on the test strip vial, the CareSens N Test Strip and Meter may not be working properly. Do not use your system and contact your authorised i-SENS sales representative.